



# HMS Medalist

## New upright high yielding navy



## NAVY BEAN

**HMS Medalist** – Upright medium-profile variety

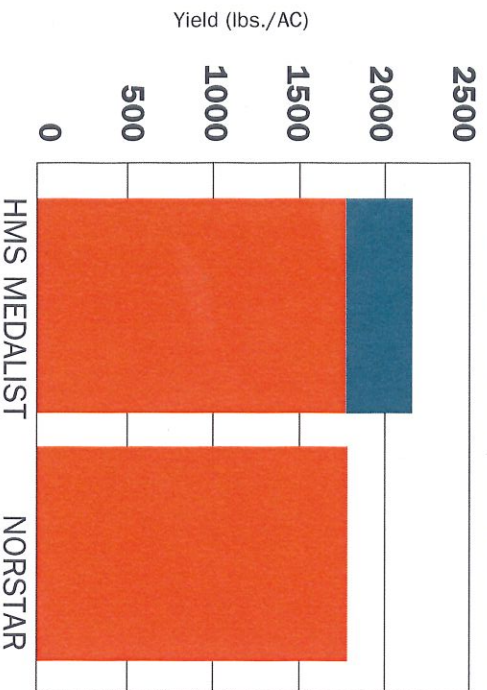
**Profile:**

HMS Medalist, an AmeriSeed variety distributed by Seedwest, is an upright medium-profile variety which has a scattered pod set with most pods held high which can be direct harvested. Its seed size and appearance are similar to Norstar. Medalist has demonstrated excellent canning characteristics.

**Economic Profile:**

Assuming a 330 lbs./AC yield increase over Norstar, this variety can potentially increase your profit \$105.60/AC on \$32/cwt. beans, minus the difference in seed cost/AC. This can calculate out to an approximate \$16,096 increased profit over Norstar on one quarter section field.

### HMS MEDALIST VS. NORSTAR



\*Data from the MIN-DAK region



#### TRIAL DATA \*

HMS Medalist	
Approx. Maturity	100-104 days
Plant Type	2B
Approx. Seed Count	2,469 seeds/lb.
Disease Resistance	IR:BCMV ("I" gene)

\*See reverse side for disease resistance abbreviation chart

For customers around the world, ADM draws on its resources—its people, products, and market perspective—to help them meet today's consumer demands and envision tomorrow's needs.

[www.Seedwest.com](http://www.Seedwest.com)

800-637-5843

[seedwest@adm.com](mailto:seedwest@adm.com)







# Black Cat (06252)

## Upright Black



## BLACK BEAN

**Black Cat (06252)** – An upright medium to wide profile variety which holds most of its pods off the ground.

### Profile:

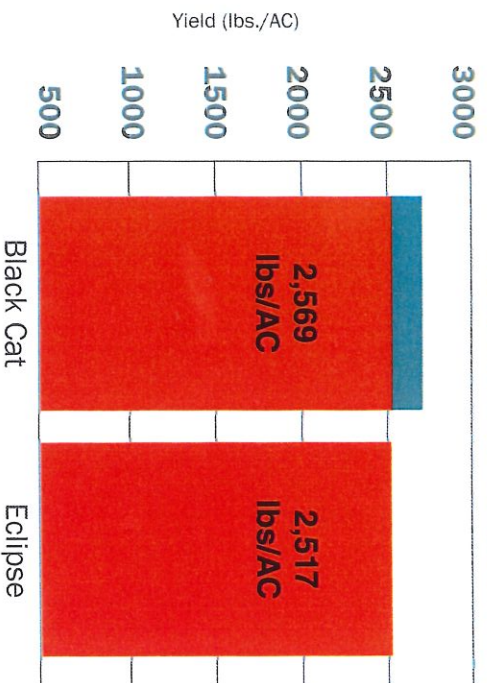
Black Cat has a more open plant architecture than Eclipse and can be direct harvested. Over 30 yr./locations Black Cat has matured in about 100-104 days or about 2 days later than Eclipse.

### Economic Profile:

Assuming a 50 lbs./AC yield advantage compared to Eclipse, profit would increase \$15/AC on \$30/cwt. beans. This amounts to about \$2,400 increased profit over Eclipse on a one quarter section field.



### Black Cat VS Eclipse



\* Mean lbs./AC from 2006-2014 from trials in Buxton, Hatton, Prosper, Forest River, Northwood, Oslo, St. Thomas, and more. Data not meant to be a guarantee of performance but rather a report of past performance.

### TRIAL DATA

Black Cat

Approx. Maturity	100-104 days
Plant Type	2A
Approx. Seed Count	2,436 seeds/lb.
Disease Resistance	IR:BCMV ("I" gene); Ua

For customers around the world, ADM draws on its resources—its people, products, and market perspective—to help them meet today's consumer demands and envision tomorrow's needs.

[www.Seedwest.com](http://www.Seedwest.com)

800-637-5843

[seedwest@adm.com](mailto:seedwest@adm.com)







# BL Black Tails

## Direct harvestable high yielding Black



### BLACK BEAN

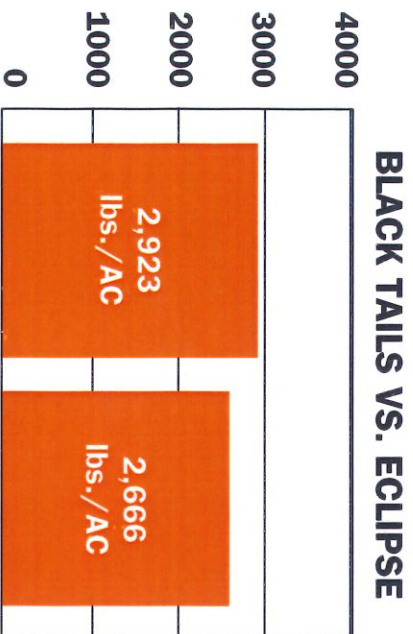
Black Tails—High yielding upright

**Profile:**

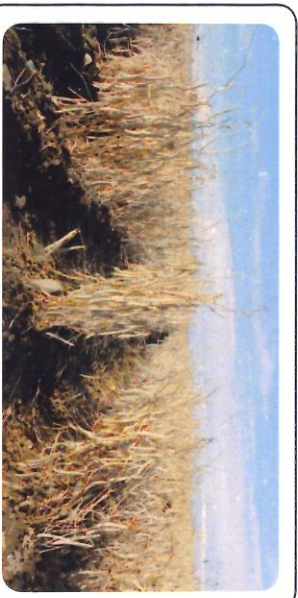
Black Tails is a new black bean variety that has shown good adaptability to North Dakota, Michigan, New York, Manitoba and Ontario production regions.

A consistent performer throughout the trialing process and in commercial production, its upright architecture and excellent yield potential make it an excellent choice for growers needing a slightly earlier variety.

Assuming the 250 lbs./AC\* yield increase over Eclipse, profit would increase \$75/AC on \$30/cwt beans. This would amount to \$7,500 increased profit over Eclipse on 100 acres of production.



Data from 2013-2016 trials in Forest River, Hatton, Prosper and Buxon locations.



### TRIAL DATA

#### BLACK TAILS

**Approx. Maturity** 99-103 days or about 1-2 days later than Eclipse\*\*

**Plant Type** 2A

**Approx. Seed Count** 2,405 seeds/lb.; slightly larger than Eclipse\*\*\*

**Disease Resistance** Preliminary testing shows the "I" gene for BCMV and has shown Rust resistance in the Colorado State University screening trial.

\* Yield data based on 20 yr./locations of data.  
 \*\* Maturity data is based on 16 yr./locations of data.  
 \*\*\* Seed count data is based on 20 yr./locations of data.

For customers around the world, ADM draws on its resources—its people, products, and market perspective—to help them meet today's consumer demands and envision tomorrow's needs.

[www.Seedwest.com](http://www.Seedwest.com)

800-637-5843

[seedwest@adm.com](mailto:seedwest@adm.com)







# BLIZZARD NAVY (08072)

Improved architecture  
for direct harvest



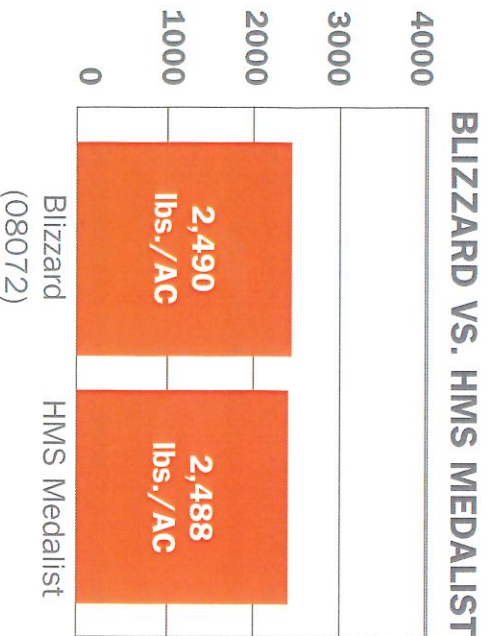
## NAVY BEAN

Improved architecture for direct harvest

### Profile:

Navy Blizzard (08072) is a broadly adapted navy bean variety ideally suited to North Dakota, Minnesota, Michigan, and Ontario production regions. A consistent performer throughout the trailing process and in commercial production, its upright architecture, high pod set, and excellent yield potential make it an excellent choice for direct harvesting and conventional growers.

While maintaining a comparable yield to HMS Medalist, Blizzard (08072) matures out 2 day's earlier than HMS Medalist providing further flexibility in planting and harvest dates. Blizzard (08072) has shown improved higher pod height than HMS Medalist.



Yield data based on 36 yr./locations of data.

Data from 2010 - 2016 trials in Bay, Huron, Sanilac, Tuscola, Pigeon, Ruth and more.



### TRIAL DATA

Blizzard (08072)

<b>Approx. Maturity</b>	97-101 days or 2 days earlier than HMS Medalist
<b>Plant Type</b>	Upright architecture
<b>Approx. Seed Count</b>	2,272 seeds/lb.
<b>Disease Resistance</b>	"I" gene for bean common mosaic virus; is resistant to Anthracnose (race 7) and has shown similar resistance to rust as HMS Medalist in the CSU rust trials.

Maturity data is based on 21 yr./locations of data.

Seed count based on 14 yr./locations of data.

For customers around the world, ADM draws on its resources—its people, products, and market perspective—to help them meet today's consumer demands and envision tomorrow's needs.

[www.seedwest.com](http://www.seedwest.com)

800-637-5843

[seedwest@adm.com](mailto:seedwest@adm.com)







# Pinto 'Torreon' 06206

High Yielding Direct Harvestable Pinto Bean!

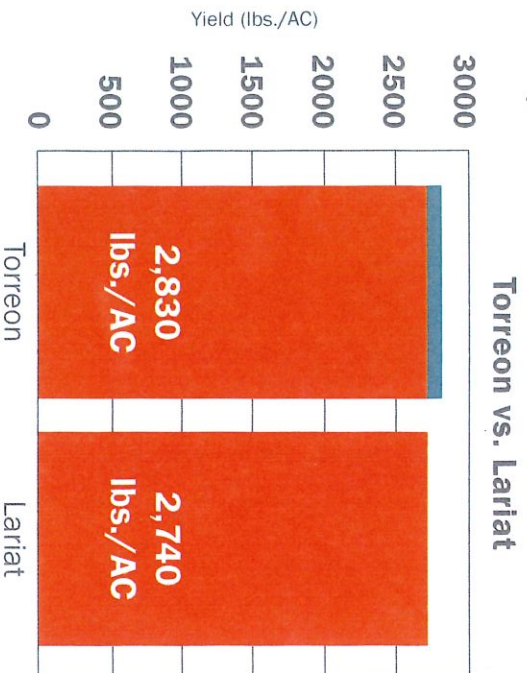


## Pinto 'Torreon' 06206

Torreon (06206) has shown broad adaptability in trials throughout the MINDAK region and in the High Plains. Torreon (06206) is indeterminate, upright in its architecture and provides great yield potential to the grower.

Preliminary data shows Torreon (06206) with a yield advantage of 90 lbs./AC.\* over Lariat in Mindak.

Assuming a 90 lbs./AC yield increase over Lariat, profit would increase \$27/AC on \$30/cwt. beans. This would amount to \$2,700 for 100 AC of production and mature 3 days earlier than Lariat.



### TRIAL DATA

06206

<b>Approx. Maturity</b>	3 days earlier than Lariat**
<b>Plant Type</b>	Upright architecture
<b>Approx. Seed Count</b>	1,224 sds./lb.***
<b>Disease Resistance</b>	Resistant to Rust strains tested for at Colorado State University

**TO PURCHASE SEED  
CONTACT YOUR LOCAL DEALER**

\*Yield data based on 29 yr./locations of data.

\*\*Maturity data is based on 6 yr./locations of data.

\*\*\*Seed count data is based on 9 yr./locations of data.

Data from 2007 - 2015 trials in Forest River, Hatton, Prosper, Northwood, St. Thomas and other MINDAK locations.

For customers around the world, ADM draws on its resources—its people, products, and market perspective—to help them meet today's consumer demands and envision tomorrow's needs.

[www.Seedwest.com](http://www.Seedwest.com)

800-637-5843

[seedwest@adm.com](mailto:seedwest@adm.com)







# Pinto Monterey\*

## Direct harvestable pinto



## PINTO BEAN

High yielding upright

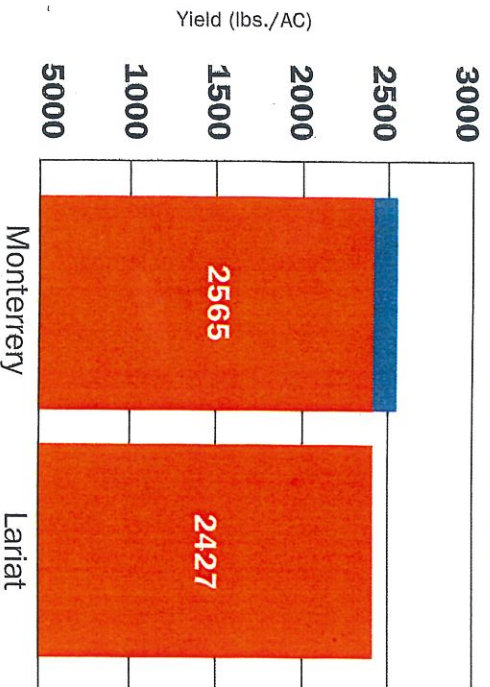
### Profile:

Pinto Monterey is a high yielding, upright, medium profile variety holding its pods off the ground. It has better architecture and is earlier than Lariat. Depending on the season Monterey will mature approximately 1 day earlier than Lariat.

### Economic Profile:

Assuming a 130 lbs./AC yield advantage compared to Lariat, profit would increase \$39/AC on \$30/cwt. beans minus the difference in seed cost/acre. This amounts to about \$6,240 increased profit over Lariat on a one quarter section field.

### MONTERREY VS. LARIAT



Yield Data (32 yr./locations)

\*Mean lbs./AC from 2007-2012 with data from Forest River, St. Thomas, Northwood, Hatton, Devil's Lake, Hoople, Pisek, Prosper, and Buxton. Data not meant to be a guarantee of performance, but rather is report of historical performance.



### TRIAL DATA

Monterrey

<b>Approx. Maturity</b>	Approx. 1 day earlier than Lariat
<b>Plant Type</b>	2B
<b>Approx. Seed Count</b>	1,344 seeds/lb.
<b>Disease Resistance</b>	IR: BCMV Ua**

\* Trialed under the temporary designation 06185.

US plant variety protection applied for; unauthorized propagation prohibited.

\*\* See reverse side for disease resistance abbreviation chart.

For customers around the world, ADM draws on its resources—its people, products, and market perspective—to help them meet today's consumer demands and envision tomorrow's needs.

[www.Seedwest.com](http://www.Seedwest.com)

800-637-5843

[seedwest@adm.com](mailto:seedwest@adm.com)

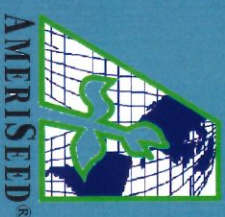






# Pinto Sinaloa \*

## High yielding upright



## PINTO BEAN

Sinaloa – High yielding upright

### Profile:

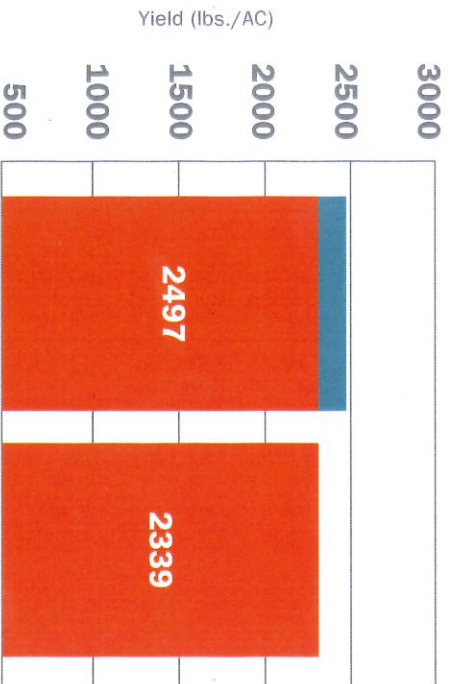
Sinaloa, an AmeriSeed variety distributed by Seedwest, is a high yielding, upright, medium profile variety holding its pods off the ground. Sinaloa has better architecture and seed color than Lariat.

### Economic Profile:

Assuming a 150 lbs./AC yield advantage compared to Lariat, profit would increase \$45/AC on \$30/cwt. beans minus the difference in seed cost/acre. This amounts to about \$7,200 increased profit over Lariat on a one quarter section field.



## SINALOA VS. LARIAT



Sinaloa

Lariat

Yield Data (33 yr./locations)

\*Mean lbs./AC from 2006-2012 with data from Forest River, Buxton, St. Thomas, Northwood, Hatton, Devil's Lake, Hoople, Pisek, and Prosper. Data not meant to be a guarantee of performance, but rather is report of historical performance.

### TRIAL DATA

SINALOA\*

<b>Approx. Maturity</b>	3 days earlier than Lariat
<b>Plant Type</b>	2B
<b>Approx. Seed Count</b>	1,280 seeds/lb.
<b>Disease Resistance</b>	IR: UR-3 gene**

\* US plant variety protection is approved; unauthorized propagation prohibited.

\*\* See reverse side for disease resistance abbreviation chart.

For customers around the world, ADM draws on its resources—its people, products, and market perspective—to help them meet today's consumer demands and envision tomorrow's needs.

[www.Seedwest.com](http://www.Seedwest.com)

800-637-5843

[seedwest@adm.com](mailto:seedwest@adm.com)







# Pinto 'Cowboy' (11278)

Direct harvestable high yielding



## PINTO BEAN

High yielding upright

### Profile:

Cowboy has shown broad adaptability in trials throughout the High Plains, Idaho and in the MN-DAK region. Cowboy is indeterminate, upright in it's architecture and tends to be broader than Sinaloa and provides great yield potential to the grower.

Excellent seed color, color retention, appearance and shape.

### Economic Profile:

Assuming a 56 lbs./AC yield advantage compared to Sinaloa.\* Growing Cowboy will potentially increase your profit by \$16/AC on \$30/cwt. beans. This amounts to \$1,600 on 100 acres .



### TRIAL DATA

#### COWBOY

**Approx. Maturity** Matures approx. the

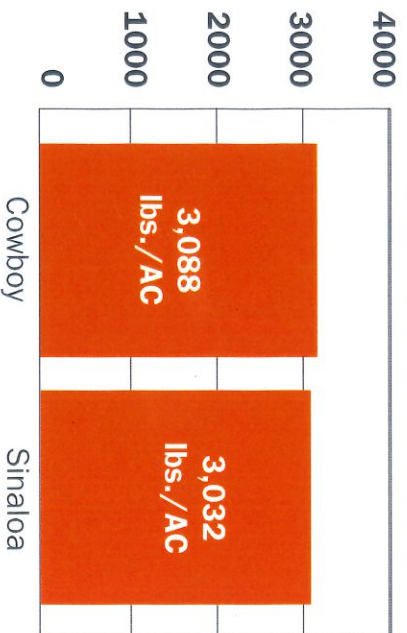
same as Sinaloa

**Approx. Seed Count** 1,247 seeds/lb.

**Disease Resistance** Resistant to Rust

strains tested for  
at Colorado State  
University

### COWBOY VS. SINALOA



Yield data based on 23 yr./locations of data.  
Data from 2012 - 2016 trials in Buxton, Forest River,  
Hatton, Prosper, Northwood, St. Thomas and more.

Maturity data is based on 14 yr./locations of data.

Seed count data is based on 23 yr./locations of data.

See reverse side for disease resistance abbreviation chart.

For customers around the world, ADM draws on its resources—its people, products, and market perspective—to help them meet today's consumer demands and envision tomorrow's needs.

[www.Seedwest.com](http://www.Seedwest.com)

800-637-5843

[seedwest@adm.com](mailto:seedwest@adm.com)

